

Engaging society in Horizon 2020



# *Experiences with citizens engagement – CASI Webinar 9/12 2015*

Edward Andersson  
edward@involve.org.uk

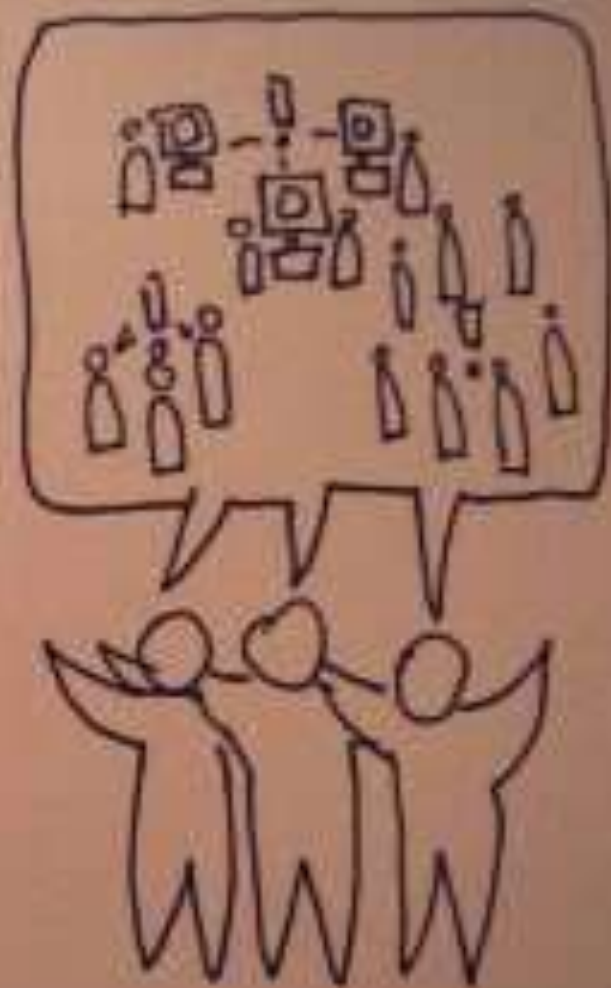


TEKNOLOGI RÅDET  
DANISH BOARD OF  
TECHNOLOGY FOUNDATION



university of  
 groningen





# Engagement across all Challenges



1. Health and demographic change
2. Secure societies
3. Food security and sustainable agriculture
4. Clean and efficient energy
5. Green Transport
6. Climate change and resource efficiency
7. Inclusive and innovative societies



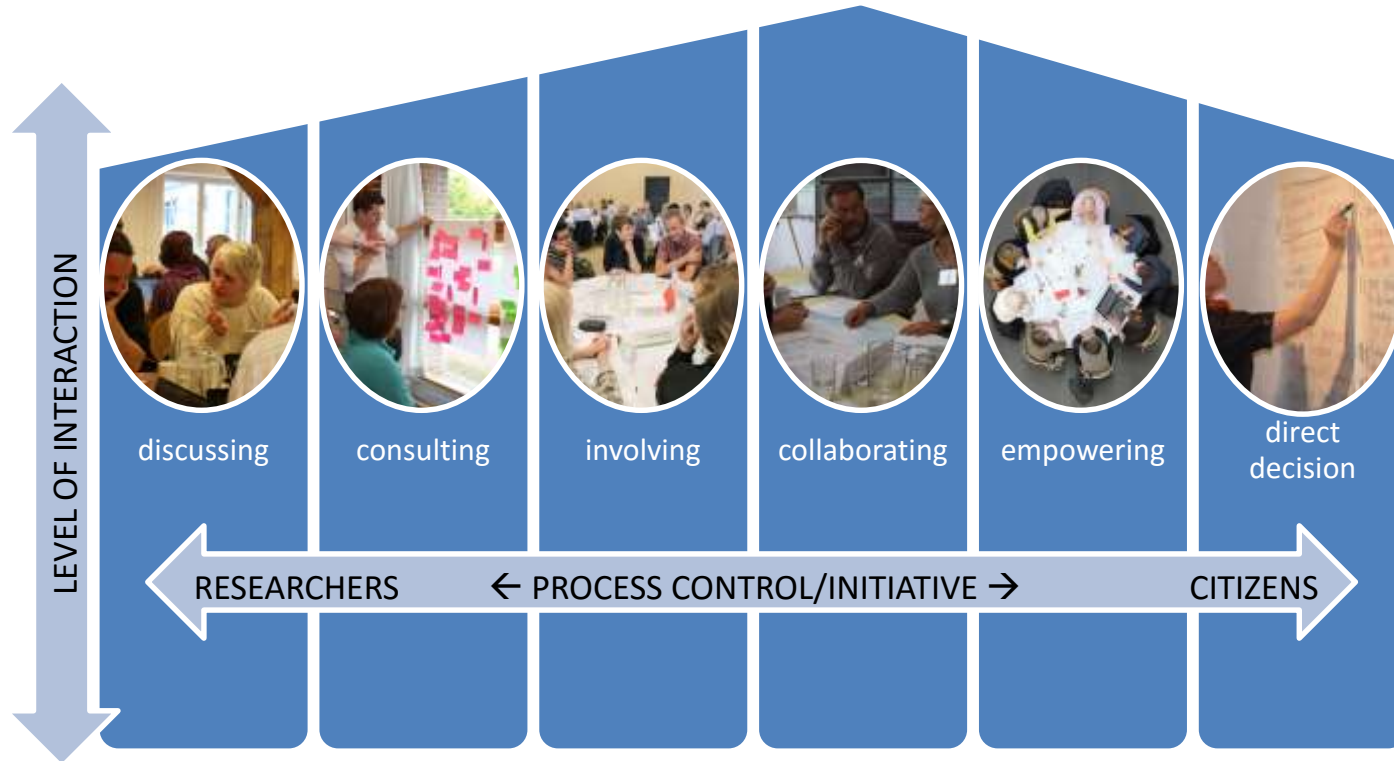
1. Policy formation
2. Programme Development
3. Project Design
4. R&I projects

# What is engagement – in Engage2020



	<b>CSOs</b>	<b>Citizens</b>	<b>Affected</b>	<b>Consumers</b>	<b>Employees</b>	<b>Users</b>	<b>Others</b>
<b>RTI policy formation</b>							
<b>RTI programme development</b>							
<b>RTI project definition</b>							
<b>RTI research activity</b>							

# Public Engagement by



## Fields of practice

- Technology Assessment
- Engagement of CSOs in R&I
- User Involvement
- Workplace Innovation
- Science Shops
- Citizen Science

# How can the public be engaged?

- Actively initialising Research
- Funding Research
- Setting R&I agendas / policy making level
- Supervising R&I
- Shaping the R&I process
- Gather Data (Citizen science)
- Dissemination of R&I outcomes



# Why Engagement in R&I?

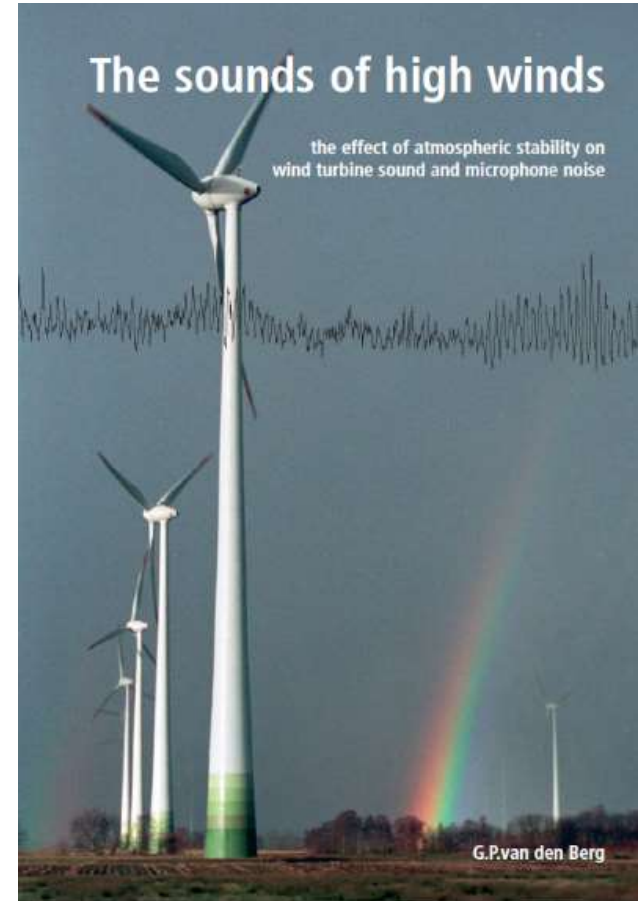


Citizens  
are often the  
experts



## Science Shop project on Wind Turbine Noise

- **Engagement method:** Science Shop
- **Research cycle level:** Project definition
- **Participating countries:** The Netherlands
- **Years:** 2002 - 2005
- **URL:**  
[https://www.rug.nl/research/portal/files/14548137/17\\_thesis.pdf](https://www.rug.nl/research/portal/files/14548137/17_thesis.pdf)



# OUR PROBLEMS

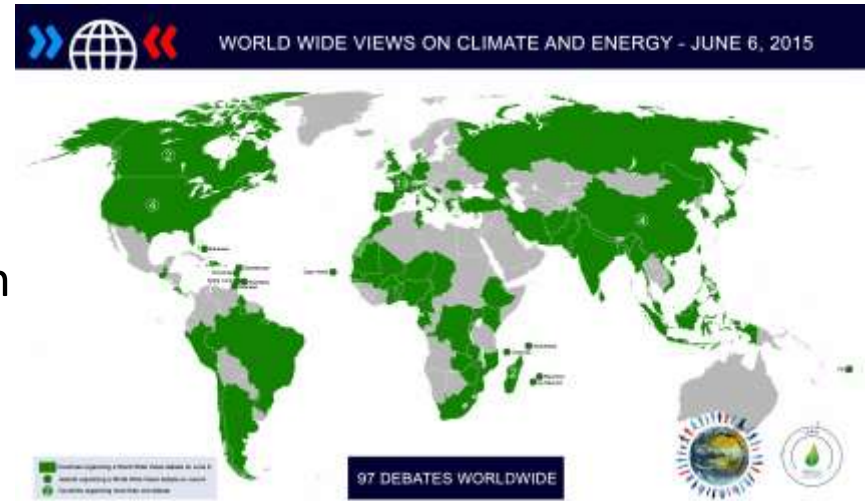
A landscape photograph showing numerous icebergs of various sizes and shapes floating in a body of water. The icebergs are white and blue, with some showing dark rock layers. The water is a dark, muted blue-grey. In the background, there are dark, low mountains under a heavy, overcast sky. The overall mood is somber and desolate.

ARE OFTEN PARTLY CAUSED BY CITIZENS THEMSELVES

# Public Engagement Examples

## World Wide Views on Climate & Energy

- **Engagement method:** World Wide Views
- **Research cycle level:** Policy formation
- **Number of participating citizens:** 97 debates, 10 000 citizens
- **Year:** 2015
- **URL:**  
<http://climateandenergy.wwviews.org/>





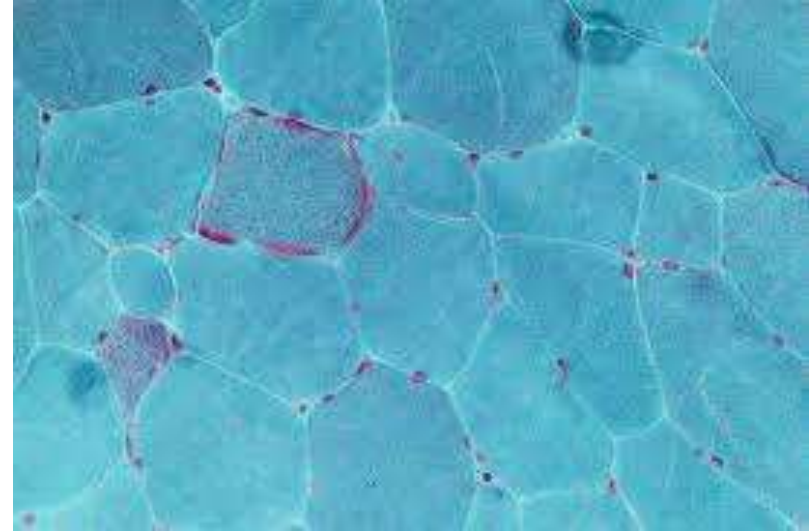
**CONFLICT IS**

**EXPENSIVE**

# Public Engagement Examples

## Mitochondria public dialogue (UK)

- **Engagement method:** Public Dialogue & Survey
- **Research cycle level:** Policy formation
- **Number of participating citizens:** 1070
- **Year:** 2012
- **URL:** <http://www.sciencewise-erc.org.uk/cms/mitochondria-replacement/>



Trust is difficult to build





## Tackling ethical issues in community-based participatory research

- **Engagement method:** Forum Theatre
- **Research cycle level:** Programme level
- **Year:** 2014
- **URL:**  
<http://www.publicengagement.ac.uk/work-with-us/completed-projects/ethics-cbpr/about-project>



# Complicated vs Complex Problems



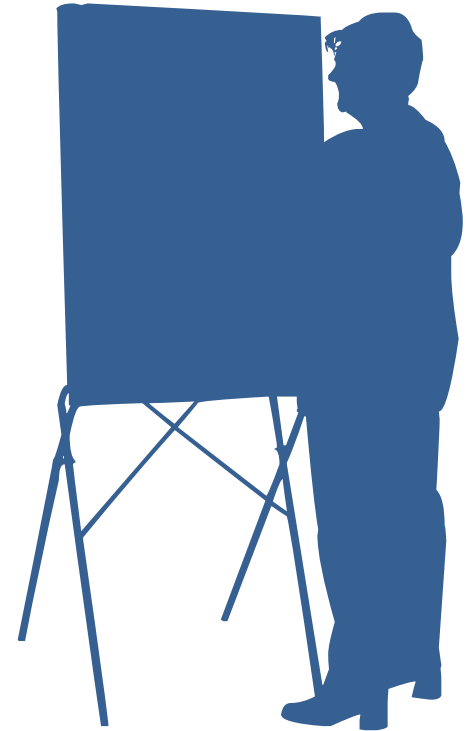
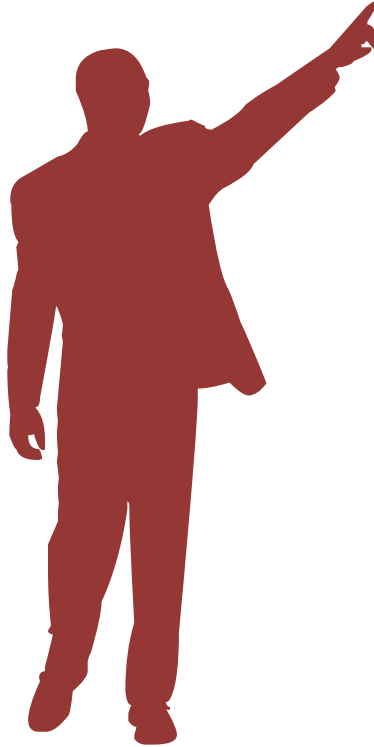
# Public Engagement Examples

## Snapshot Serengeti - Citizen Science project

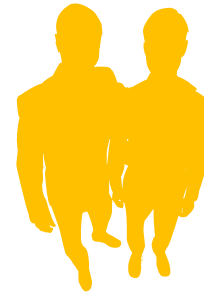
- **Engagement method:** Citizen science
- **Research cycle level:** Research and innovation activity
- **Participating countries:** worldwide/international
- **Years:** since December 2012
- **URL:**  
<http://www.snapshotserengeti.org/>



# Different Roles



# Different meetings



Role of participants: Gather & Analyse data

Number of participants: No upper limit

Type of participant: Usually open to anyone

Usual format: Online

Role of participants: Actively initialising Research

Number of participants: Usually small

Type of participant: Often CSOs or communities

Usual format: Ongoing face to face

Role of participants: Setting R&I agendas / policy making level

Number of participants: Usually less than 100

Type of participant: Stratified sample

Usual format: Face to face meetings



- Citizens Jury

12

10 hrs+

- Citizen Science

12 000

10 min+

- Call for examples/Questionnaire (200+ responses)
- Combining methods to 57 examples
- Methods assessed according to criteria
- Filled in fact sheet peer reviewed within consortium
- Uploaded to online platform

<http://actioncatalogue.eu/>





## 1 What is public engagement?

by Sonia Bussu, Lars Klüver, Leonard Henner, Rainer Kuhn, Grace Mbungu and Linda Nerling

### 1.1 What is public engagement in research and innovation?

Public engagement is about involving citizens in the decision-making process or in the research process itself. The public can be involved in Research and Innovation (R&I) in a number of different ways and with different objectives:

- to elicit input in the form of opinions (e.g. public opinion surveys and focus groups)
- to elicit judgments and decisions that could inform policies (e.g. consensus conferences and citizens' juries).

[For a description of different methods click here to chapter 3.](#)

The term "Public engagement" was taken up by the science communication and informal science education community to mean primarily a series of activities focused on fostering interaction between scientists and publics (Rowe & Frewer, 2005).

Public engagement is about bringing on board the widest possible diversity of actors.

It is different from 'public understanding' or 'communication' or even "consultation" approaches.

Just who is this 'public' anyway?

 [Tap here to read more](#)

The difference between communication, consultation and participation

 [Tap here to read more](#)

- **Report:** [Public Engagement Methods and Tools](#)
- **Report:** [Current Praxis of Policies and Activities](#)
- **Report:** [Public Engagement – Promises, demands and fields of practice](#)
- **Report:** [Policy options for engagement in science and innovation](#)
- **Report:** [What the Future Holds for Societal Engagement](#)  
[Future Engagement](#)

- **Policy brief 1:** : [Policies and Activities Supporting Societal Engagement in R&I](#)
- **Policy brief 2:** [Public Engagement in R&I Processes – Promises and Demands](#)
- **Policy brief 3:** [Current Praxis of Policies and Activities Supporting Engagement in R&I – Trends, Needs and Barriers](#)
- **Policy brief 4:** [Policy options to increase public engagement in science and innovation within the frame of Horizon2020](#)
- **Policy brief 5:** [Societal Engagement – Policy and Practice in the Future](#)
- **Policy brief 6:** [Public Engagement –What’s next?](#)

# Questions



Thank you for your attention



TEKNOLOGI RÅDET  
DANISH BOARD OF  
TECHNOLOGY FOUNDATION

involve  
Making potential real

DIALOGIK  
grippe en dialog med de offentlige myndigheder  
og samarbejde med forskere og virksomheder



university of  
 groningen

ARC FUND